

# KENT WATER PLANT

2009

COST SUPPORT





		2007	2007	2008	2008	2009	2009
		Approved	Actual	Approved	Actual	Approved	Actual
		Budget	Expense	Budget	Expense	Budget	Expense
<b>Other Operation &amp; Maint</b>							
21	Travel & Transportation	\$ 3,500.00	\$ 3,157.00	\$ 3,500.00	\$ 2,891.43	\$ 3,500.00	\$ 3,236.60
28	Vehicle Fuel	\$ 8,000.00	\$ 11,919.00	\$ 11,000.00	\$ 13,240.34	\$ 16,000.00	\$ 7,305.94
31	Utilities	\$ 190,000.00	\$ 202,565.00	\$ 195,000.00	\$ 236,870.51	\$ 248,000.00	\$ 235,794.35
32	Communications/Postage	\$ 6,000.00	\$ 8,223.00	\$ 6,000.00	\$ 8,940.06	\$ 6,000.00	\$ 4,498.18
33	Rents & Leases	\$ 7,000.00	\$ 6,129.00	\$ 7,000.00	\$ 1,496.89	\$ 7,000.00	\$ 6,586.60
34	Professional Services	\$ 18,000.00	\$ 15,330.00	\$ 7,000.00	\$ 3,425.33	\$ 4,500.00	\$ 6,409.87
35	Maint of Equip & Facil	\$ 30,000.00	\$ 27,690.00	\$ 30,000.00	\$ 18,964.29	\$ 27,000.00	\$ 32,164.80
36	Insurance & Bonding	\$ 37,000.00	\$ 33,474.00	\$ 37,000.00	\$ 29,904.22	\$ 37,000.00	\$ 30,399.57
37	Printing, Photocopy, Advert	\$ 800.00	\$ 723.00	\$ 800.00	\$ 491.14	\$ 800.00	\$ 478.10
39	Misc Contractual Service	\$ 37,000.00	\$ 36,790.00	\$ 40,000.00	\$ 40,692.76	\$ 40,000.00	\$ 39,563.54
41	Office Supplies	\$ 1,400.00	\$ 1,398.00	\$ 1,400.00	\$ 1,423.25	\$ 1,400.00	\$ 991.56
42	Operating Materials	\$ 200,000.00	\$ 207,167.00	\$ 207,000.00	\$ 221,719.18	\$ 210,000.00	\$ 240,946.15
44	Sm Toll/Minor Equip<\$2500	\$ 2,600.00	\$ 5,296.00	\$ 2,800.00	\$ 6,906.35	\$ 5,800.00	\$ 6,255.47
<b>Other Operation &amp; Maint:</b>		\$ 541,300.00	\$ 559,861.00	\$ 548,500.00	\$ 586,965.75	\$ 607,000.00	\$ 614,630.73

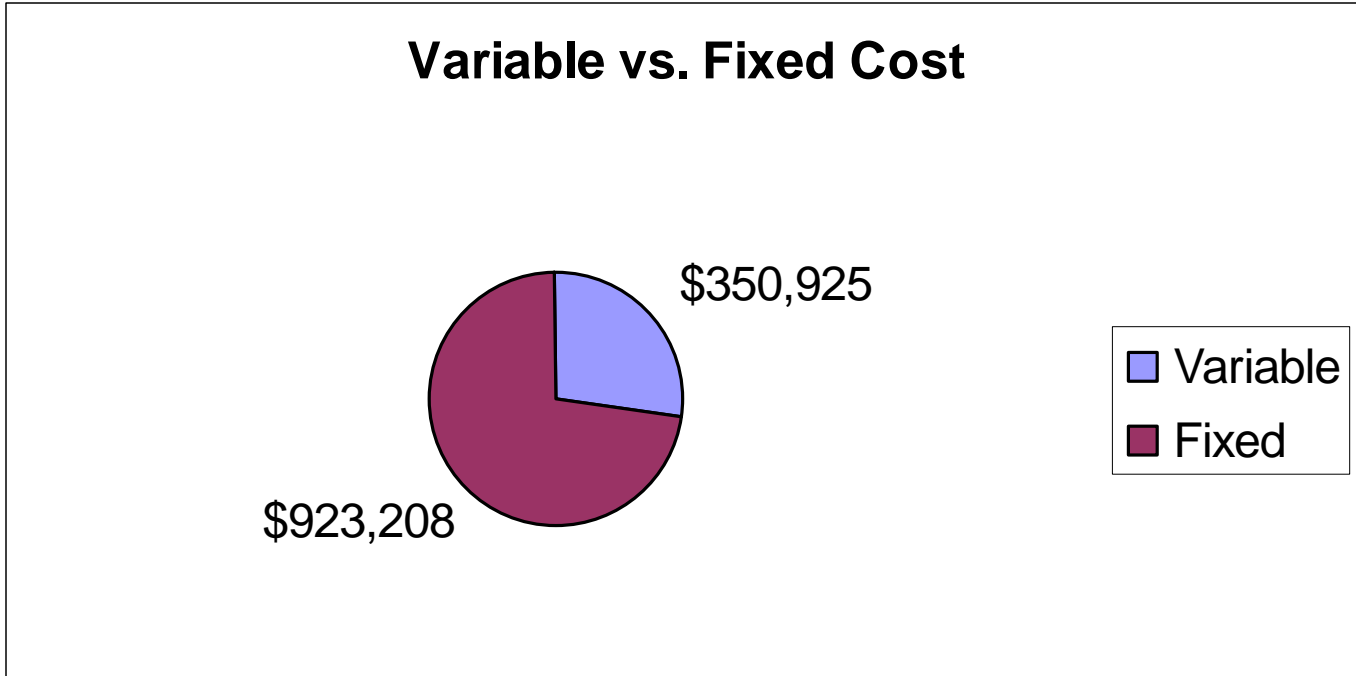


# Fixed Vs. Variable Costs

	Total	Elec	Gas	Chem	Variable	Fixed	V	F
2003	\$ 1,099,632	\$ 129,536	\$ 36,000	\$ 95,502	\$ 261,038	\$ 838,594	24%	76%
2004	\$ 1,236,016	\$ 144,777	\$ 37,200	\$ 124,284	\$ 306,261	\$ 929,755	25%	75%
2005	\$ 1,229,181	\$ 161,554	\$ 38,400	\$ 151,258	\$ 351,212	\$ 877,969	29%	71%
2006	\$ 1,265,454	\$ 135,023	\$ 39,600	\$ 166,292	\$ 340,915	\$ 924,539	27%	73%
2007	\$ 1,320,188	\$ 163,208	\$ 40,800	\$ 175,800	\$ 379,808	\$ 940,380	29%	71%
2008	\$ 1,360,061	\$ 178,266	\$ 42,000	\$ 174,409	\$ 394,675	\$ 965,387	29%	71%
2009	\$ 1,408,400	\$ 179,654	\$ 43,200	\$ 199,714	\$ 422,568	\$ 985,832	30%	70%
					Variable	Fixed	27%	73%
					\$ 350,925	\$ 923,208		



# Personal and O & M



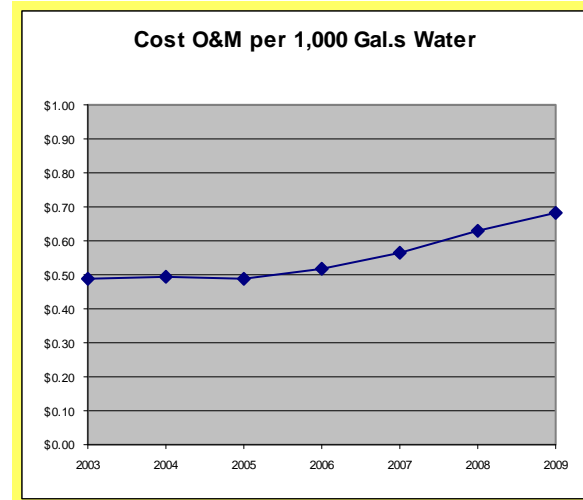


# OPERATION AND MAINTENANCE

Year	O&M Budget	O&M Acutal	Budget - Acutal
2003	\$ 470,600.00	\$ 491,445.00	\$ (20,845.00)
2004	\$ 469,600.00	\$ 499,191.00	\$ (29,591.00)
2005	\$ 471,400.00	\$ 509,586.00	\$ (38,186.00)
2006	\$ 516,300.00	\$ 523,258.58	\$ (6,958.58)
2007	\$ 541,300.00	\$ 559,861.00	\$ (18,561.00)
2008	\$ 548,500.00	\$ 586,965.75	\$ (38,465.75)
2009	\$ 607,000.00	\$ 614,630.73	\$ (7,630.73)

# O & M COST INCREASE

2003	\$0.49
2004	\$0.49
2005	\$0.49
2006	\$0.52
2007	\$0.56
2008	\$0.63
2009	\$0.68





# Electric Costs (6 year)

YEAR	WATER PLANT	WELLS	1460 E. SUMMIT BOOSTER	OLD BOOSTER & STORAGE TANKS
2003	\$76,674.05	\$33,201.25	\$14,235.17	\$5,425.97
2004	\$88,198.12	\$31,101.41	\$14,918.19	\$10,558.99
2005	\$82,640.33	\$51,664.73	\$17,231.77	\$10,017.05
2006	\$72,566.48	\$34,269.94	\$18,843.66	\$9,343.33
2007	\$94,263.87	\$40,493.96	\$18,450.18	\$10,000.23
2008	\$101,795.61	\$48,481.56	\$18,312.04	\$9,676.54
2009	\$100,592.07	\$51,001.86	\$15,796.37	\$12,264.05

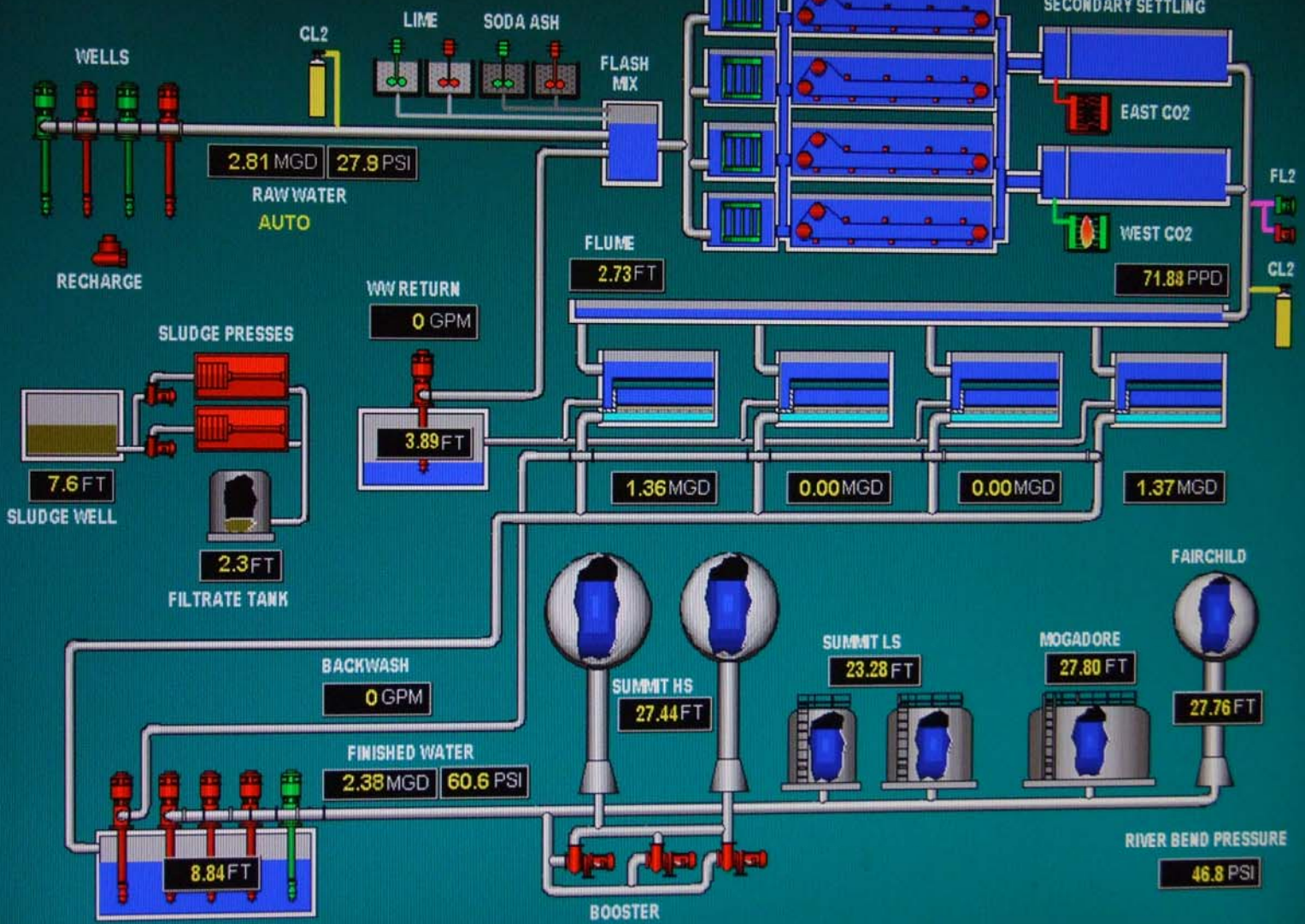
YEAR	TOTAL ELECTRIC EXPENSE
2003	\$129,536.44
2004	\$144,776.71
2005	\$161,553.88
2006	\$135,023.41
2007	\$163,208.24
2008	\$178,265.75
2009	\$179,654.35

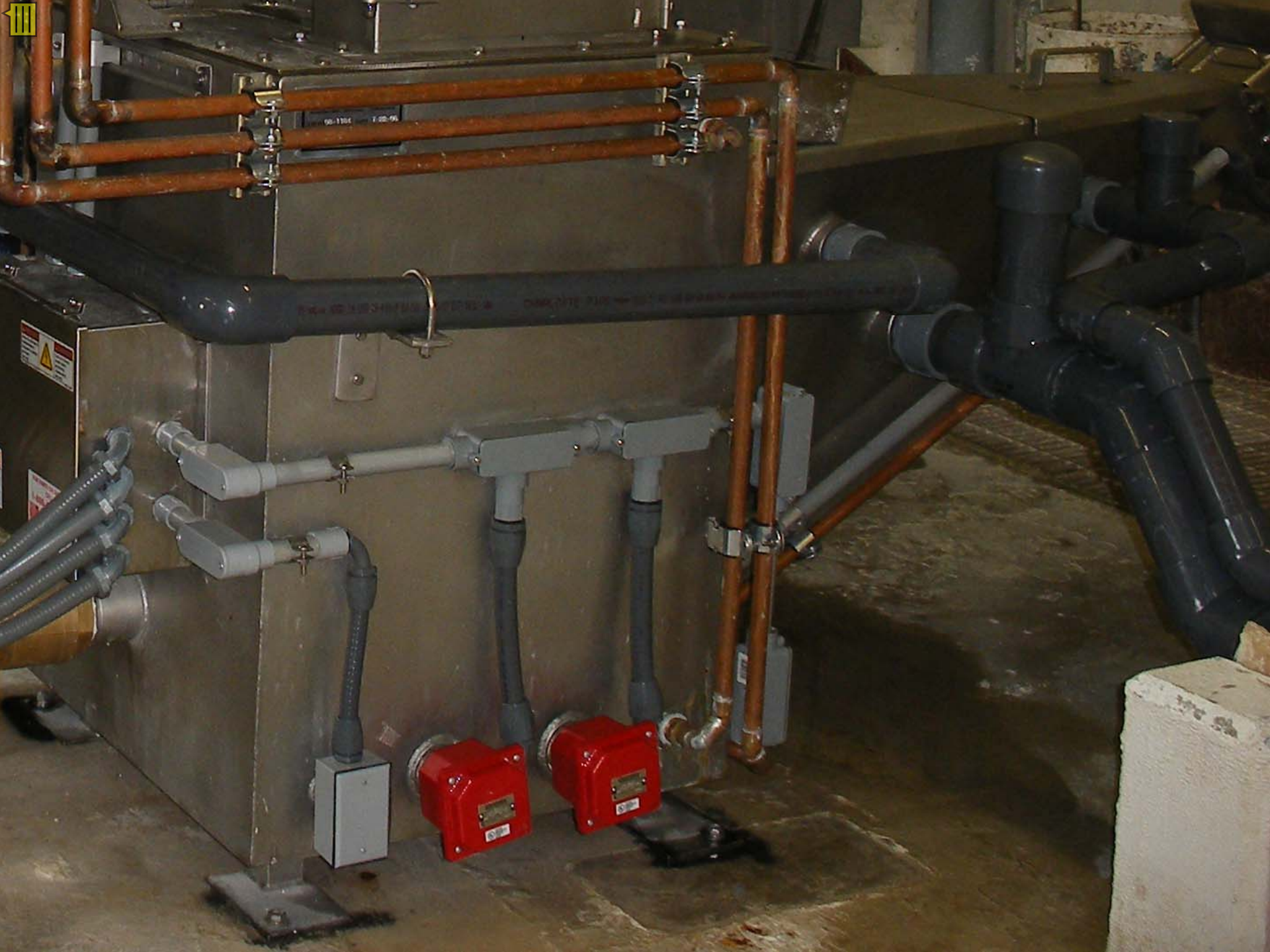


Year	Personal Services Actual	1,000-Gal Water	Cost per 1,000 Gal Water	Percent Change Yr./Yr.	
2003	\$608,187	1,009,000	\$0.60		
2004	\$736,825	1,015,000	\$0.73	20.4%	
2005	\$719,595	1,043,000	\$0.69	-5.0%	
2006	\$742,195	1,015,000	\$0.73	6.0%	
2007	\$760,327	994,000	\$0.76	4.6%	
2008	\$773,096	929,000	\$0.83	8.8%	
2009	\$793,769	899,000	\$0.88	6.1%	Avg./Yr.
		Actual Chnage 2003 to 2009:	\$185,582	30.5%	5.1%
		Change per 1,000 Gal. 2003 to 2009:	\$0.28	46.5%	7.7%

# KENT WTP

2:10:21 PM 2/25/2010







1000 011 20

JET

31

CAUTION

lorine



1017

# GENERAC





CAUTION  
DO NOT TOUCH  
HOT SURFACES  
OR MOVING PARTS  
OF THE ENGINE  
OR GENERATOR  
OR OTHER  
ELECTRICAL  
EQUIPMENT  
OR YOU  
MAY BE  
SERIOUSLY  
INJURED  
OR  
KILLED

CHANGING  
ACID

**KRAFT**  
800-835-5254

WARNING: DO NOT  
REMOVE THE CAP  
FROM THE BATTERY  
TERMINALS OR  
CONNECT TO THE  
BATTERY TERMINALS  
WHILE THE ENGINE  
IS RUNNING

