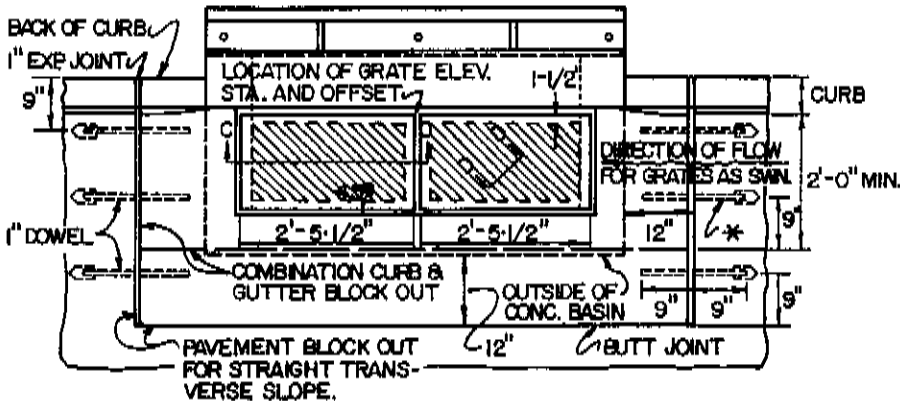
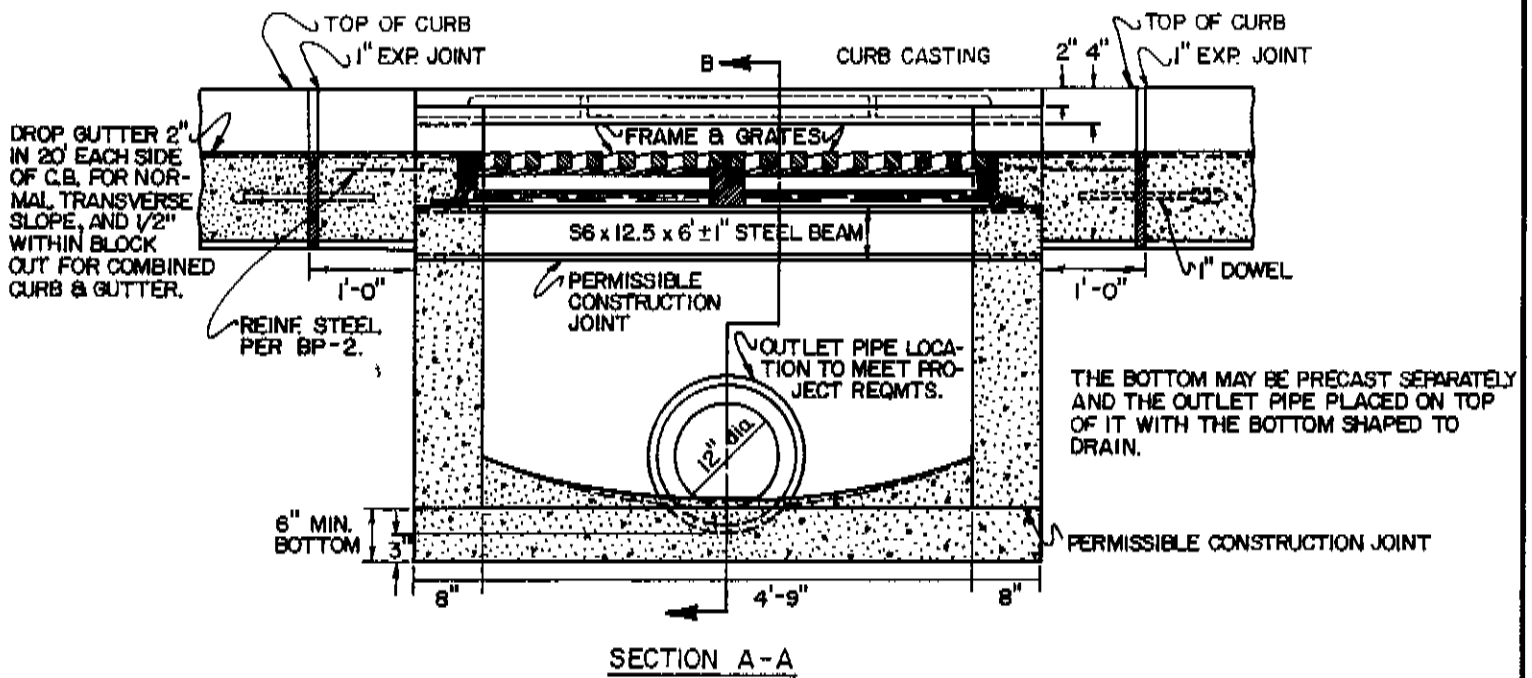
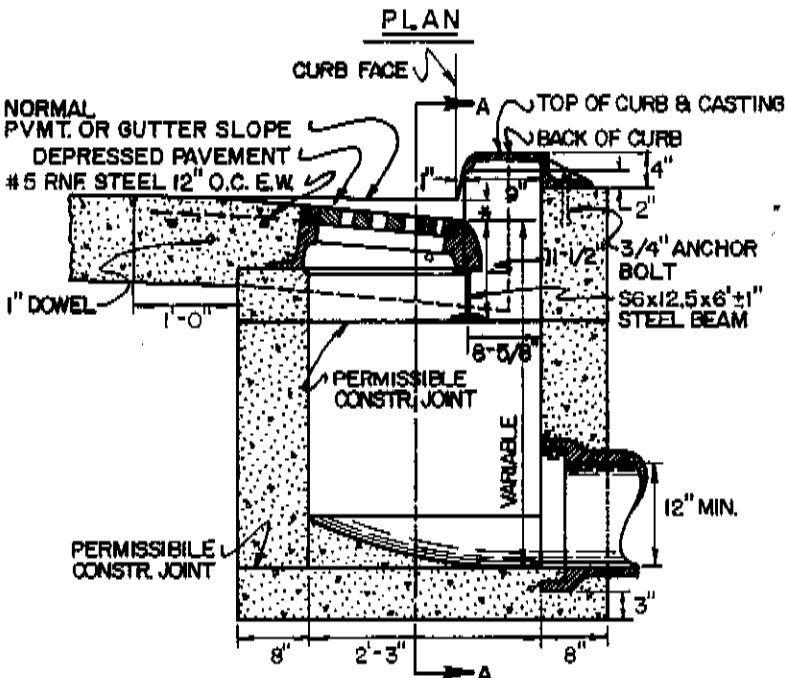


# **CATCH BASIN DETAILS**



\* DOWEL LOCATION FOR CURB & GUTTER



\* 2" FOR NORMAL PVMT. SLOPE, 1/2 FOR GUTTER SLOPE.

### NOTES

**CASTINGS:** THE DESIGN SHALL BE ESSENTIALLY THE SAME AND EQUALLY AS STRONG AS THOSE SHOWN HEREON. MINIMUM WEIGHTS ARE: CURB CASTING 305 LBS., TWO GRATES 254 LBS., FRAME 590 LBS., & TWO "V" GRATES 210 LBS.

**BEARING AREAS:** OF FRAME AND GRATE SHALL BE SO FITTED AND FINISHED, WITHOUT PROJECTIONS, AS TO PROVIDE A FIRM AND EVEN SEAT FOR ALL PORTIONS OF THE GRATE IN THE FRAME W/OUT ROCKING.

**DOWELS:** FOUR 1" x 18" DOWELS ARE REQUIRED FOR CONCRETE PAVEMENT OR GUTTER BLOCKOUT. SEE O.D.O.T. BP-4 FOR DOWEL DETAILS.

**BRICK OR CONCRETE BLOCK:** SIDE WALLS, WHEN USED IN PLACE OF CONCRETE, SHALL BE 8" NOMINAL THICKNESS.

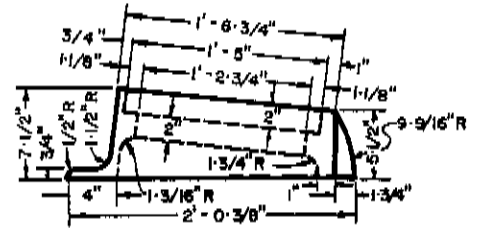
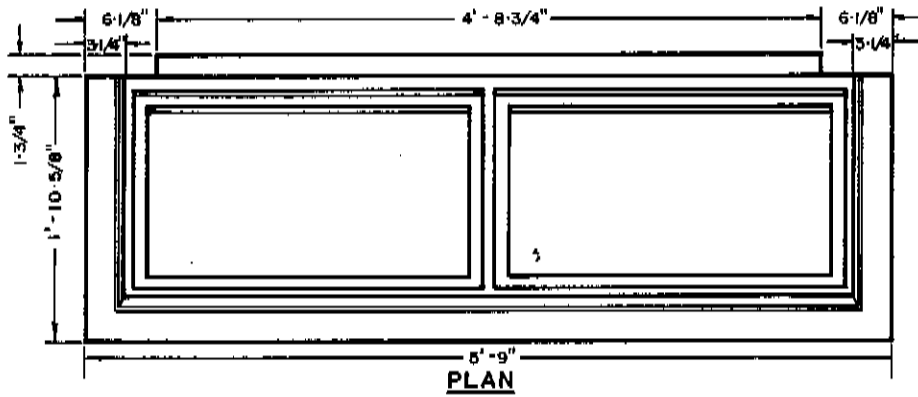
**BLOCKOUT:** SHALL BE PAVED WITH CLASS C CONCRETE IN PCC PAVEMENT OR GUTTER AND FOR AS PART OF THE PAVEMENT OR GUTTER WITH NO DEDUCTION IN PAVEMENT, CURB OR GUTTER QUANTITIES BECAUSE OF CASTINGS. A CLASS C CONCRETE APRON THE SIZE OF THE 2' GUTTER BLOCKOUT SHALL BE CAST IN PLACE IN ASPHALT PAVEMENT (NO DOWELS REQUIRED) WITH THE COST INCLUDED IN THE CATCH BASIN BID PRICE. NO DEDUCTION TO BE MADE IN CURB QUANTITIES.

**PRECAST:** CONSTRUCTION IS PERMITTED, EXCEPT FOR APRON, AND CONCRETE SHALL MEET REQUIREMENTS OF 706.13 WITH 8±2% AIR VOID CONTENT IN THE HARDENED CONCRETE. PRECAST WALLS SHALL HAVE A MINIMUM THICKNESS OF 6" AND REINFORCING SHALL BE SUFFICIENT TO PERMIT SHIPPING & PLACEMENT WITHOUT DAMAGE.

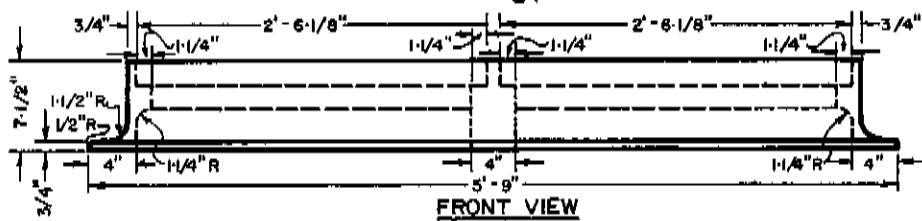
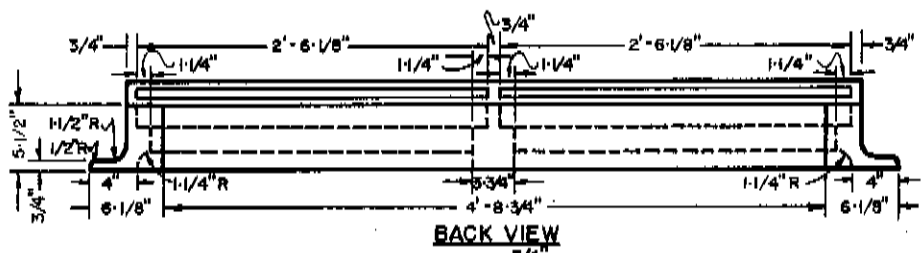
FOR FRAME AND GRATE DETAILS SEE SHEET CB-2.

CITY OF KENT, OHIO			
DEPARTMENT OF PUBLIC SERVICE			
ENGINEERING DIVISION			
CONSTRUCTION STANDARDS			
CATCH BASIN CB-3			
DATE	1/27/89	BY	CLW
CITY ENGINEER	A. A. Bumbach		

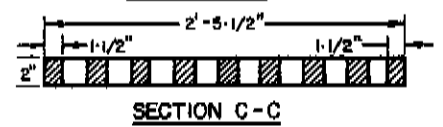
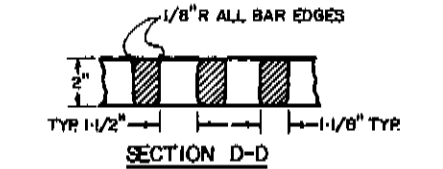
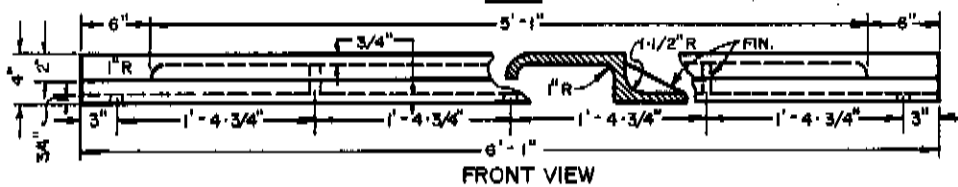
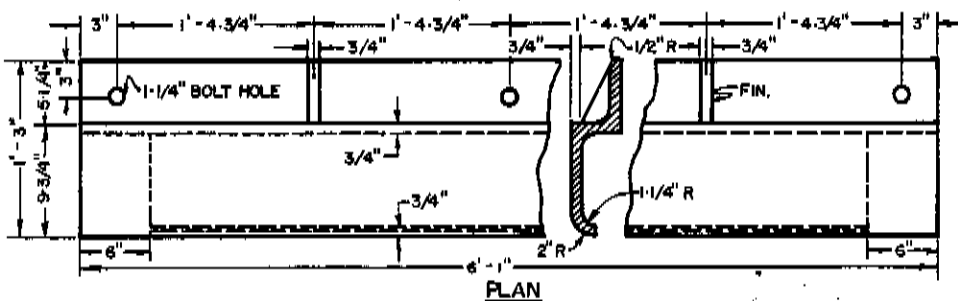
# FRAME



**END VIEW (FRAME)**

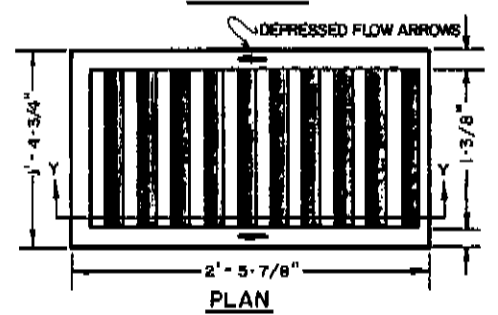
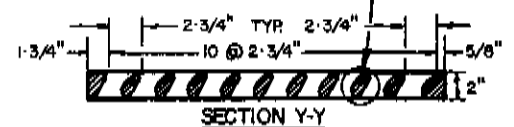
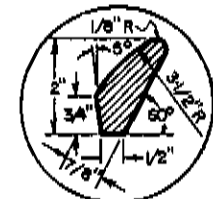


# CURB CASTING



GRATE SIZE 2'-5 1/2" x 1'-4 3/8" x 2" (2 REQD.)

# STANDARD GRATE

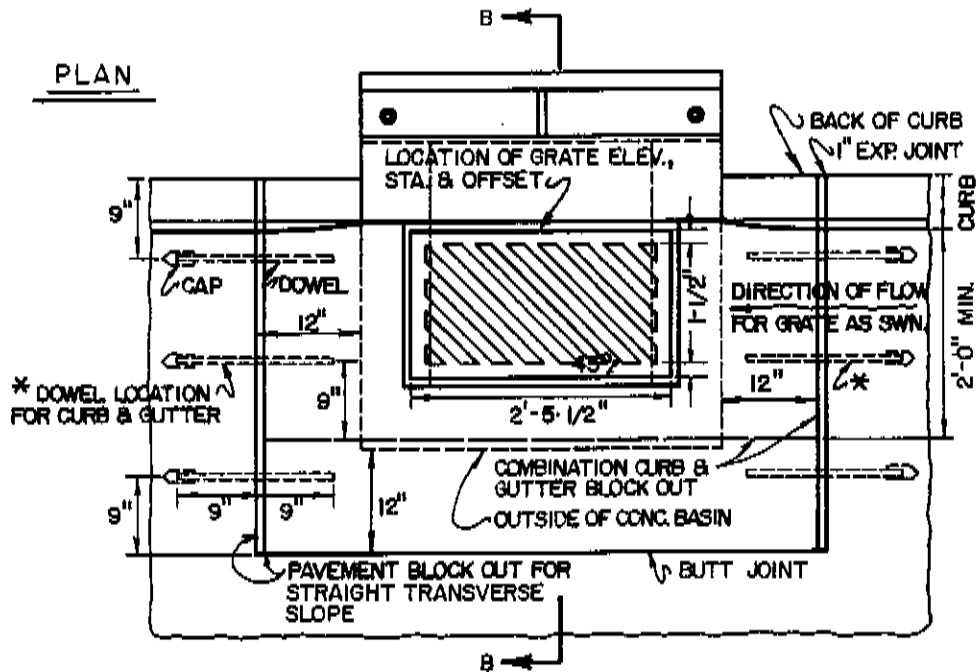


# GRATE "V"

CITY OF KENT, OHIO			
DEPARTMENT OF PUBLIC SERVICE			
ENGINEERING DIVISION			
<b>CONSTRUCTION STANDARDS</b>			
<b>CB-3 CATCH BASIN</b>			
<b>FRAME &amp; GRATE DETAILS</b>			
DATE	7/28/87	BY	CLW NO. CB-2
CITY ENGINEER	<i>J. L. ...</i>		

FOR CATCH BASIN DETAILS SEE SHEET CB-1.

**PLAN**



**NOTES**

CASTINGS: THE DESIGN SHALL BE ESSENTIALLY THE SAME AND EQUALLY AS STRONG AS THOSE SHOWN HEREON. MIN. WEIGHTS ARE: CURB CASTING 170 LBS., STANDARD GRATE 127 LBS., FRAME 320 LBS. AND "V" GRATE 105 LBS.

DOWELS: FOUR 1" x 18" DOWELS ARE REQUIRED FOR CONCRETE PAVEMENT OR GUTTER BLOCKOUT. SEE O.D.O.T. BP-4 FOR DOWEL DETAILS.

BEARING AREAS OF FRAME AND GRATE SHALL BE SO FITTED AND FINISHED AS TO PROVIDE A FIRM AND EVEN SEAT FOR ALL PORTIONS OF THE GRATE IN THE FRAME. NO PROJECTIONS SHALL EXIST ON BEARING AREAS OF EITHER CASTING AND THE GRATE SHALL SEAT IN ITS FRAME WITHOUT ROCKING.

BRICK OR CONCRETE BLOCK SIDE WALLS, WHEN USED IN PLACE OF CONCRETE, SHALL BE 8" NOMINAL THICKNESS.

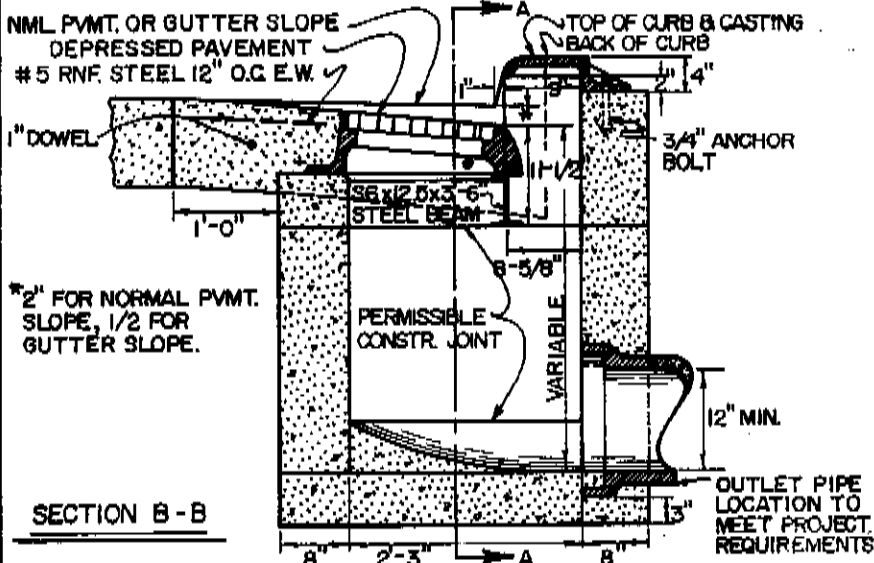
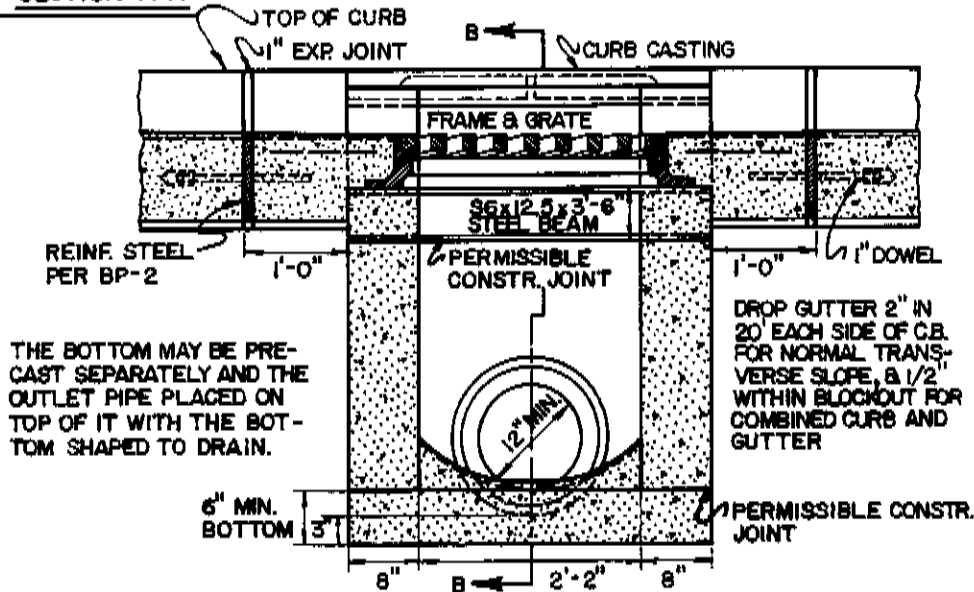
BLOCKOUT SHALL BE PAVED WITH CLASS C CONCRETE IN PCC PAVEMENT OR GUTTER & PAID FOR AS PART OF THE PAVEMENT OR GUTTER WITH NO DEDUCTION IN PAVEMENT, CURB OR GUTTER QUANTITIES BECAUSE OF THE CASTINGS. A CLASS C CONCRETE APRON THE SIZE OF THE 2' GUTTER BLOCKOUT SHALL BE CAST IN PLACE IN ASPHALT PAVEMENT (NO DOWELS REQUIRED) WITH THE COST INCLUDED IN THE CATCH BASIN BID PRICE. NO DEDUCTION TO BE MADE IN CURB QUANTITIES.

PRECAST CONSTRUCTION IS PERMITTED, EXCEPT FOR THE APRON, AND CONCRETE SHALL MEET THE REQUIREMENTS OF 706.13 WITH 6±2% AIR VOID CONTENT IN THE HARDENED CONCRETE. PRECAST WALLS SHALL HAVE A MINIMUM THICKNESS OF 6" & REINFORCING SHALL BE SUFFICIENT TO PERMIT SHIPPING AND PLACEMENT WITHOUT DAMAGE.

STANDARD GRATE AS SHOWN IN THE PLAN VIEW SHALL BE PROVIDED UNLESS THE PLANS SPECIFICALLY REQUIRE GRATE "V". PLACE GRATE SO THE DIAGONAL BARS DIRECT DRAINAGE FLOW TOWARD THE CURB. ALL BAR EDGES TO BE ROUNDED 1/8" R.

FOR CATCH BASIN FRAME AND GRATE DETAILS SEE SHEET CB-4.

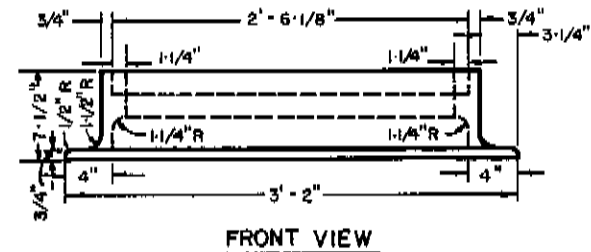
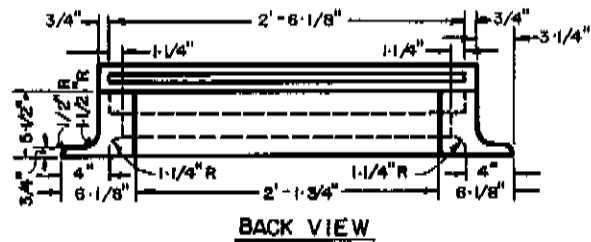
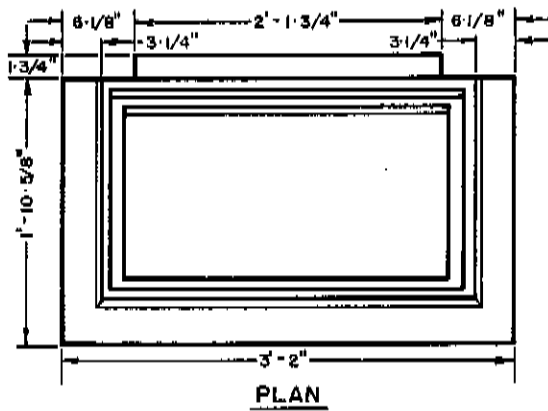
**SECTION A-A**



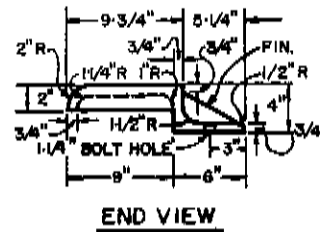
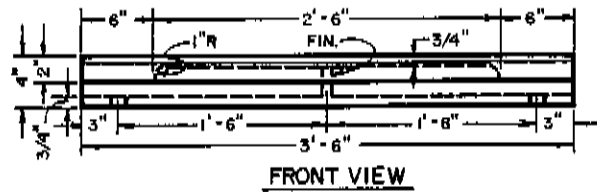
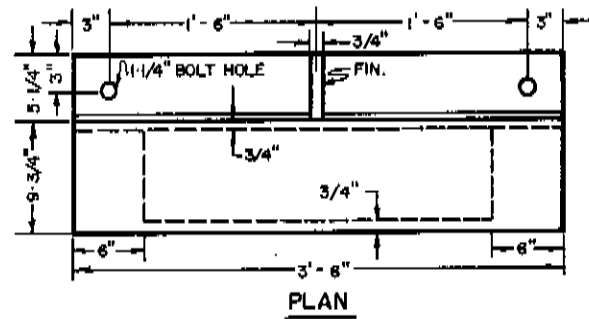
**SECTION B-B**

<b>CITY OF KENT, OHIO</b>			
DEPARTMENT OF PUBLIC SERVICE ENGINEERING DIVISION			
<b>CONSTRUCTION STANDARDS</b>			
CATCH BASIN CB-3A			
DATE	1/27/89	BY	CLW
		NO.	CB-3
CITY ENGINEER		<i>[Signature]</i>	

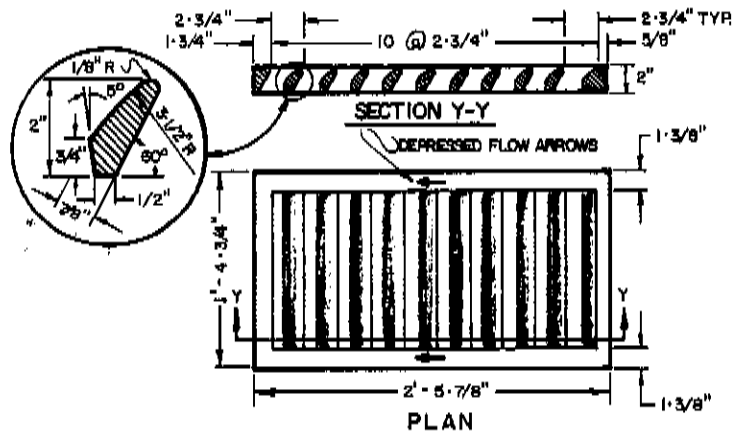
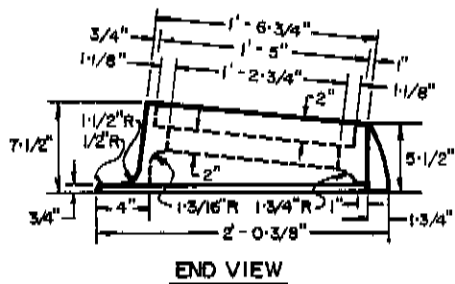
# FRAME



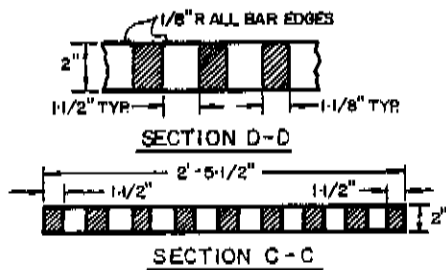
# CURB CASTING



# GRATE "V"



# STANDARD GRATE



GRATE SIZE 2'-5-1/2" x 1'-4-3/8" x 2"

FOR CATCH BASIN DETAILS SEE SHEET CB-3.

<b>CITY OF KENT, OHIO</b> DEPARTMENT OF PUBLIC SERVICE ENGINEERING DIVISION		
<b>CONSTRUCTION STANDARDS</b>		
<b>CB-3A CATCH BASIN</b> <b>FRAME &amp; GRATE DETAILS</b>		
DATE	7/29/87	BY CLW
CITY ENGINEER	<i>R. Allen Bamber</i>	