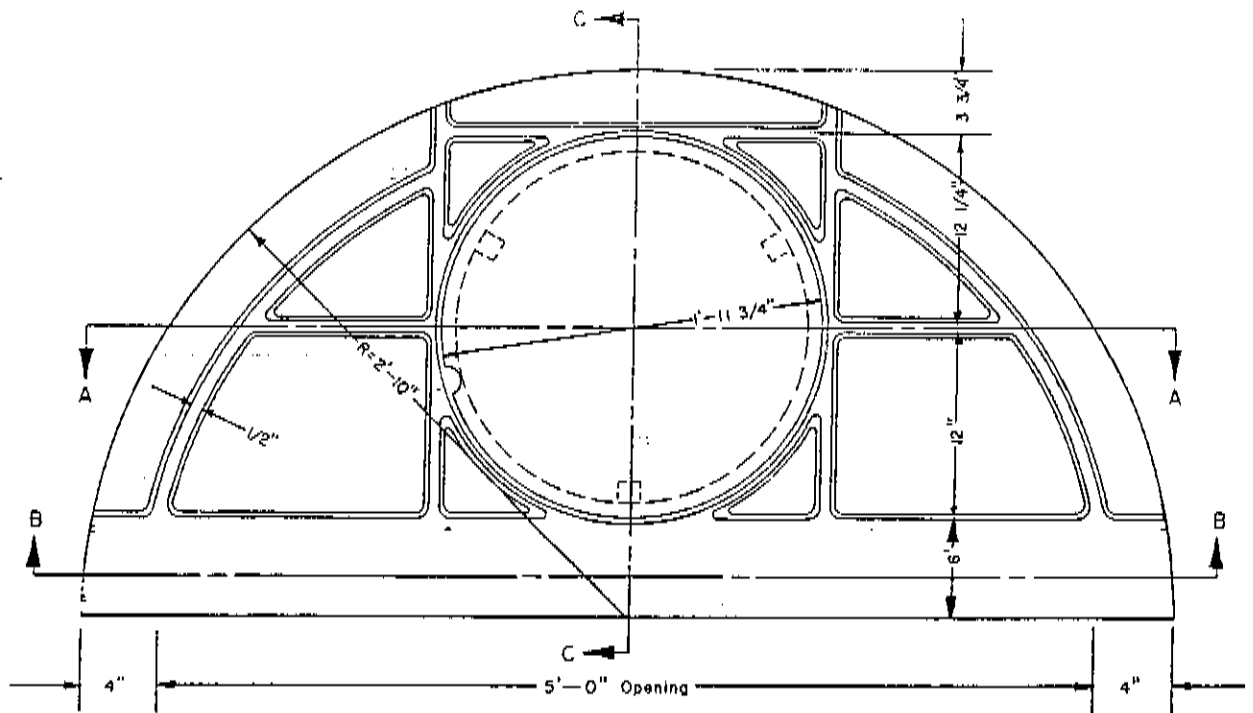
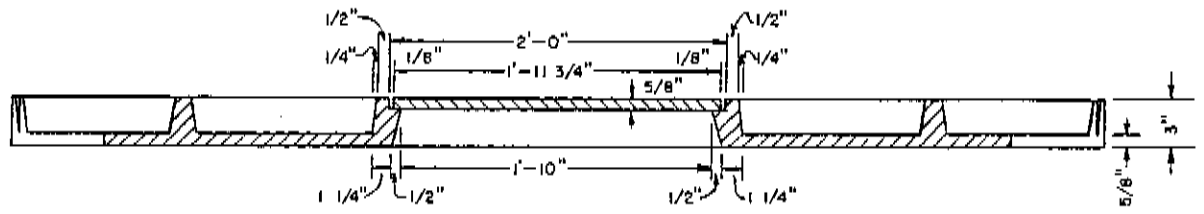


**FOR  
REFERENCE  
ONLY**

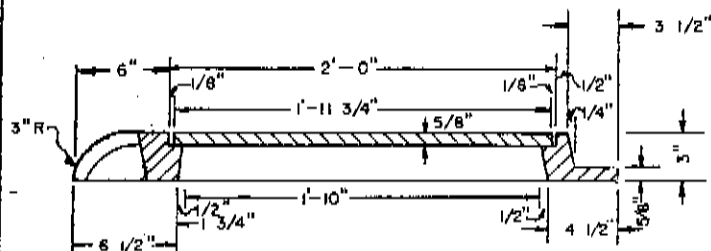
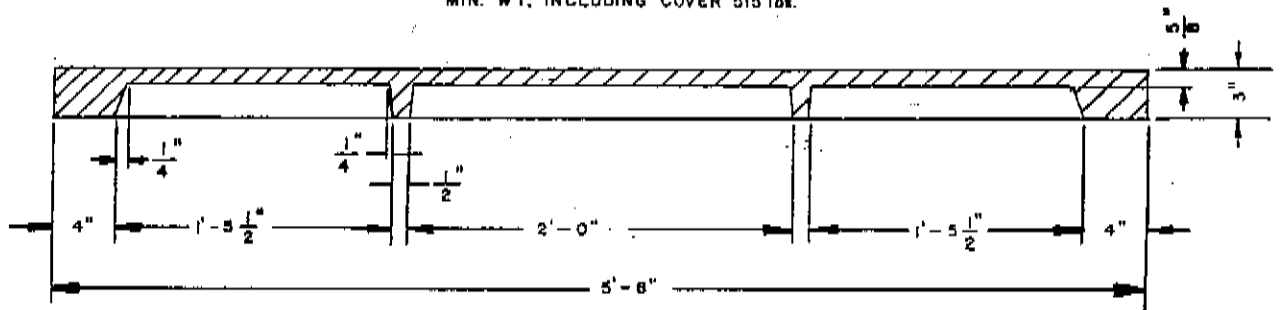


NOTE—Lid Diamond Studded, 5/8" Net  
 Thickness, Diamonds 1/8" High. EAST AKRON STD. NO. 475

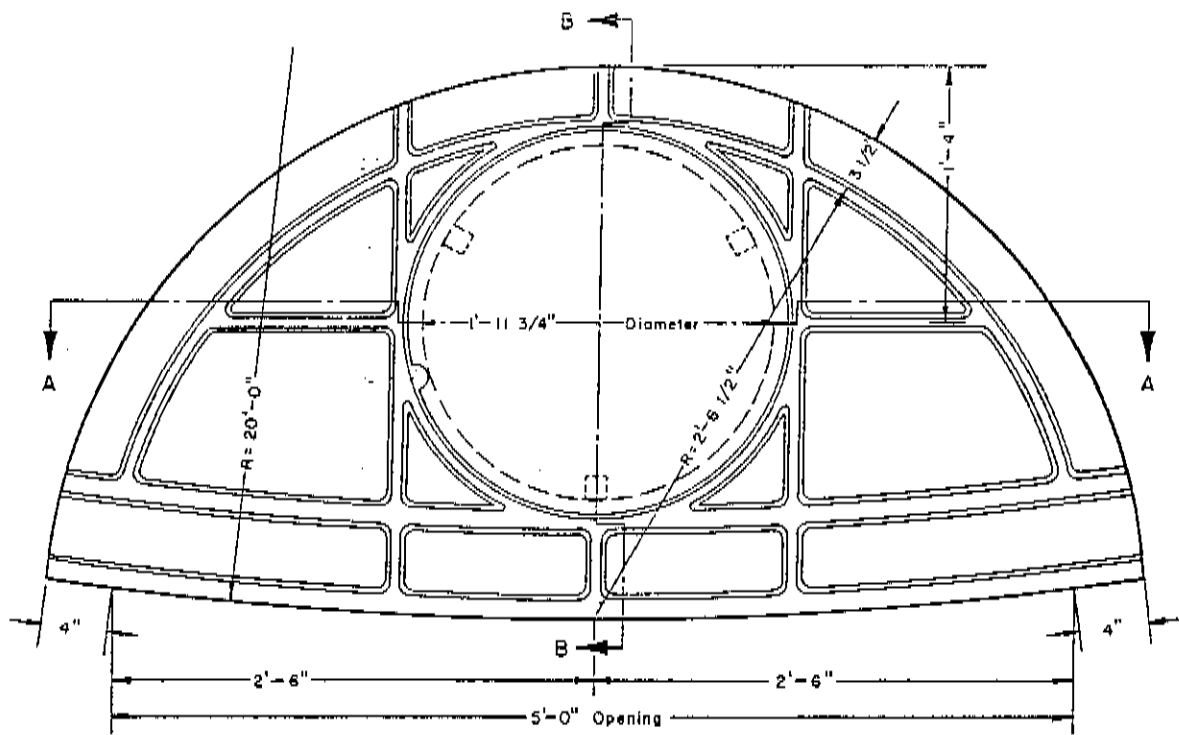


NOTE: THIS CASTING NOT TO BE USED UNLESS APPROVED BY THE ENGINEER.

EAST AKRON CASTING STD. NO. 125  
 MIN. WT. INCLUDING COVER 515 lbs.

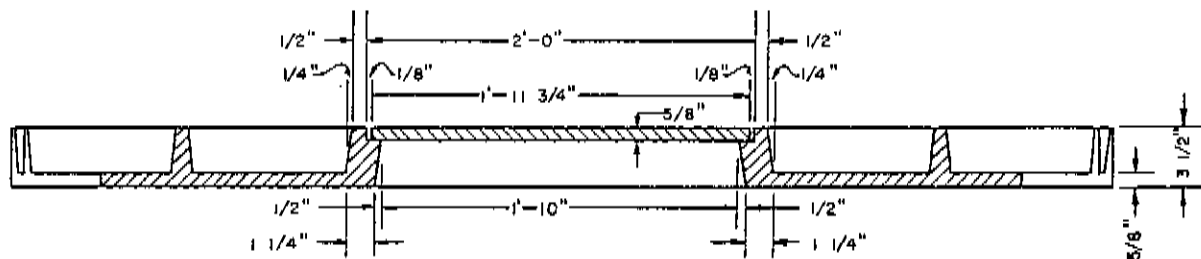


CITY OF KENT, OHIO		
DEPT. OF PUBLIC SERVICE		
ENGINEERING DIVISION		
CONSTRUCTION STANDARDS		
STANDARD INLET NO.3 TOP		
CASTING FOR STRAIGHT CURB		
DATE	BY	NO.
12/77	H.C.S.	RF-1
CITY ENGINEER B. BOUMAN		



**PLAN**

NOTE—Lid Diamond Studded, 5/8" Net Thickness, Diamonds 1/8" High.

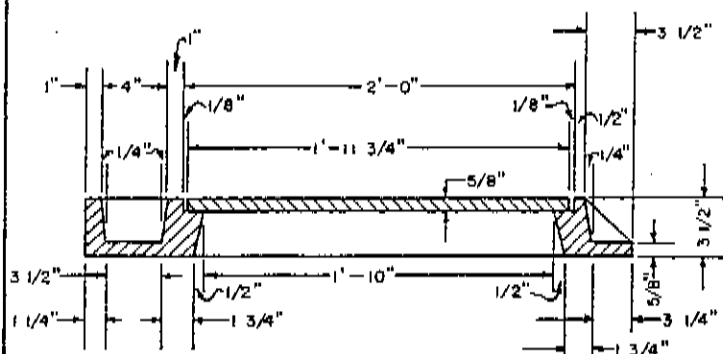


**SECTION A-A**

(Approx. Wt. 550 lbs.)

NOTE:

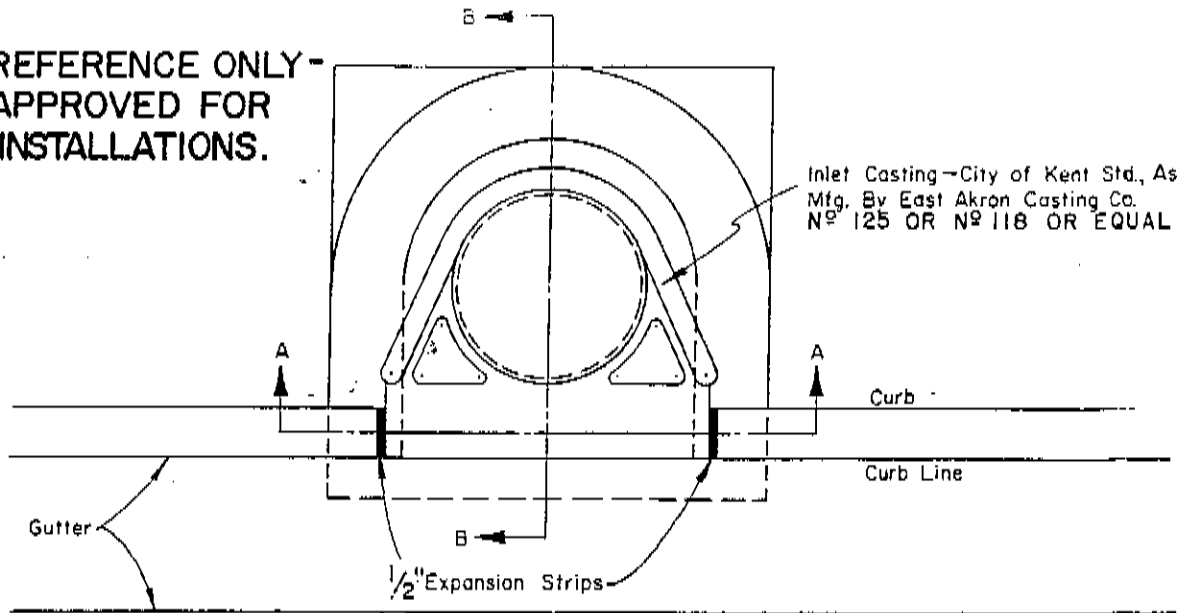
THIS CASTING NOT TO BE USED UNLESS APPROVED BY THE CITY ENGINEER.



**SECTION B-B**

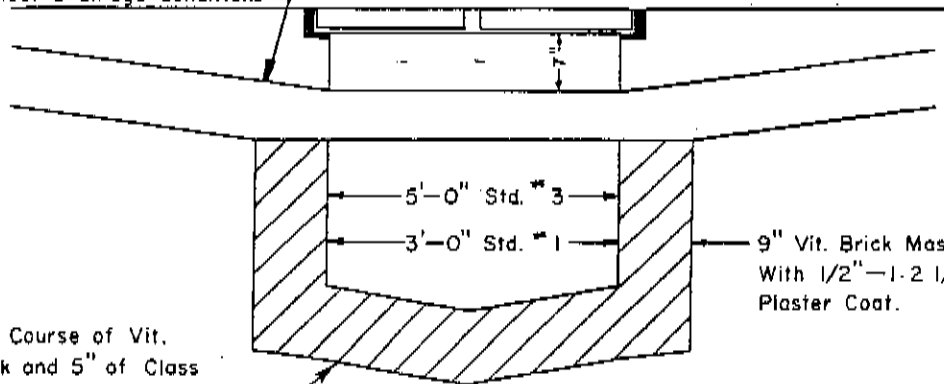
CITY OF KENT, OHIO		
DEPT. OF PUBLIC SERVICE		
ENGINEERING DIVISION		
CONSTRUCTION STANDARDS		
STANDARD INLET NO. 3 TOP CASTING FOR CURVED CURB		
DATE	BY	NO.
12/77	HCS	RF-2
CITY ENGINEER		
B. BOUMAN		

**\* FOR REFERENCE ONLY -  
NOT APPROVED FOR  
NEW INSTALLATIONS.**

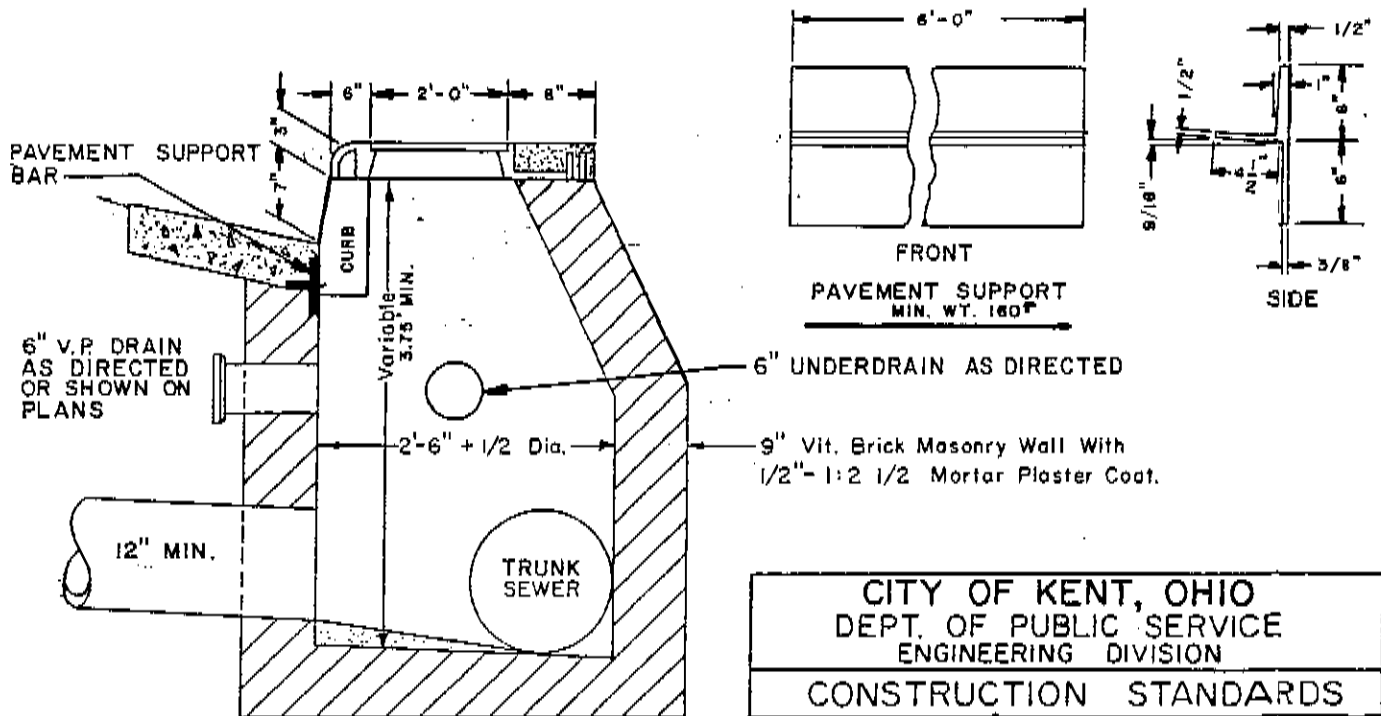


**PLAN**

Slope Gutter Line To Meet Drainage Conditions



**SECTION A-A**



**SECTION B-B**

**CITY OF KENT, OHIO**  
**DEPT. OF PUBLIC SERVICE**  
**ENGINEERING DIVISION**

---

**CONSTRUCTION STANDARDS**

---

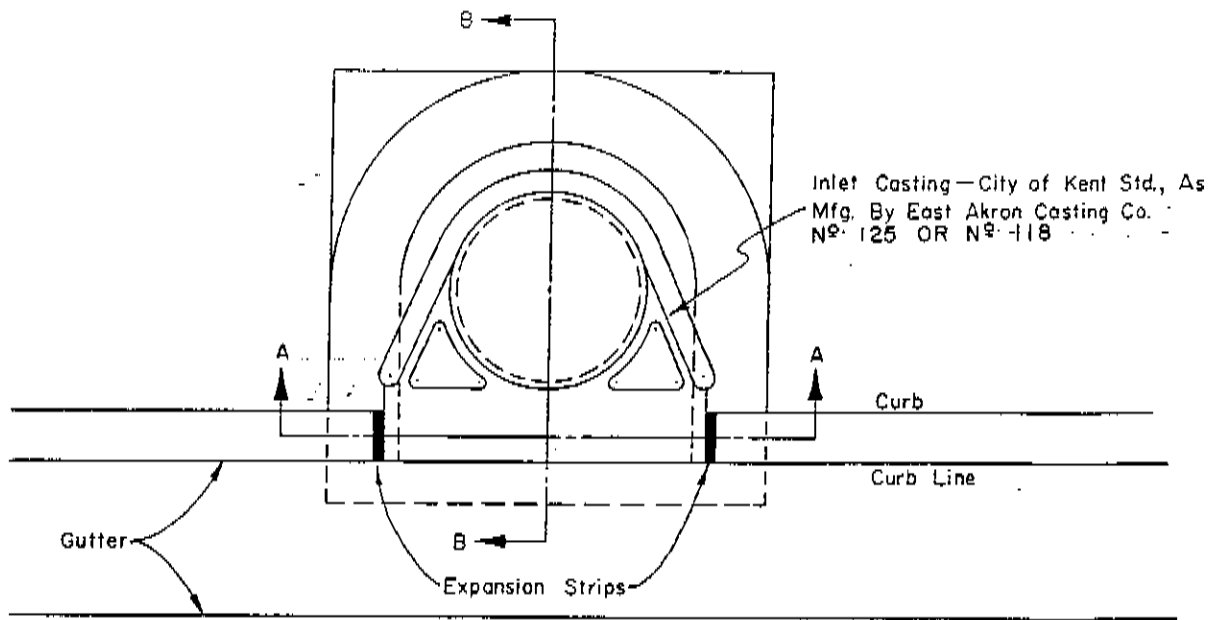
**STANDARD N<sup>o</sup> 1 & 3 COMBINATION**  
**MANHOLE INLET\***

---

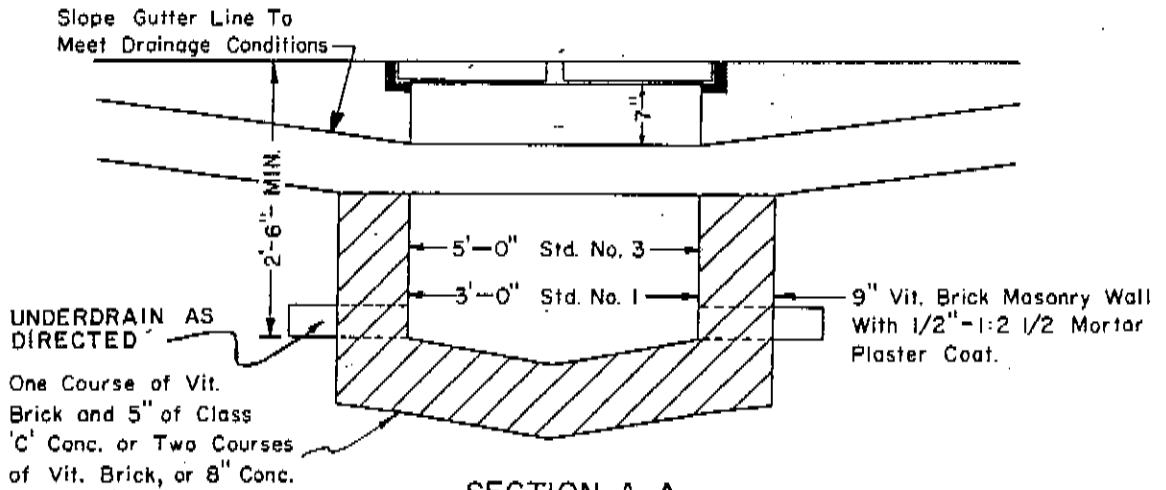
DATE 12/77 BY H.C.S. NO RF-3

---

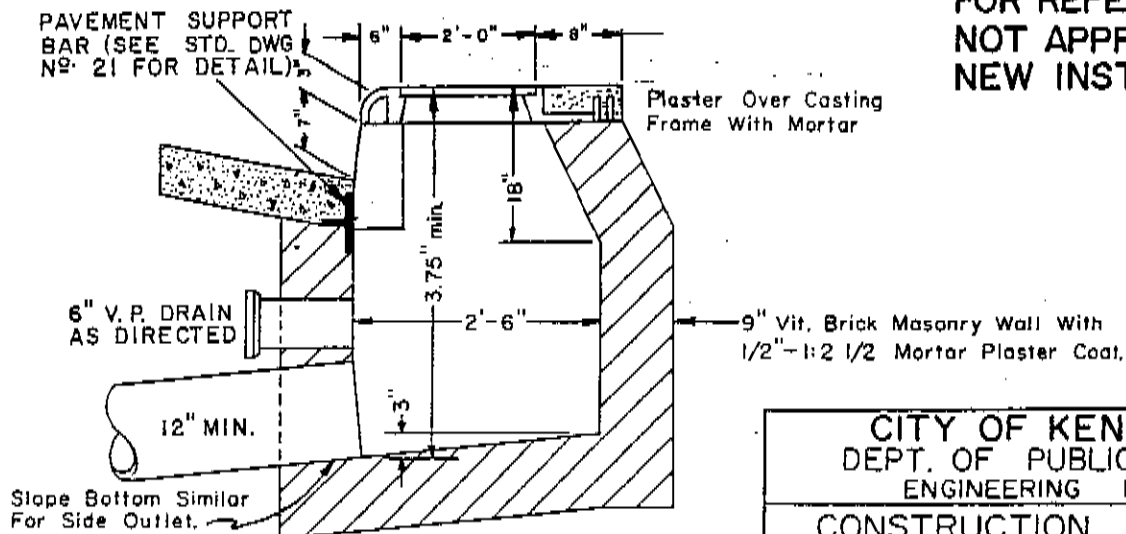
CITY ENGINEER B. BOUMAN



**PLAN**



**SECTION A-A**

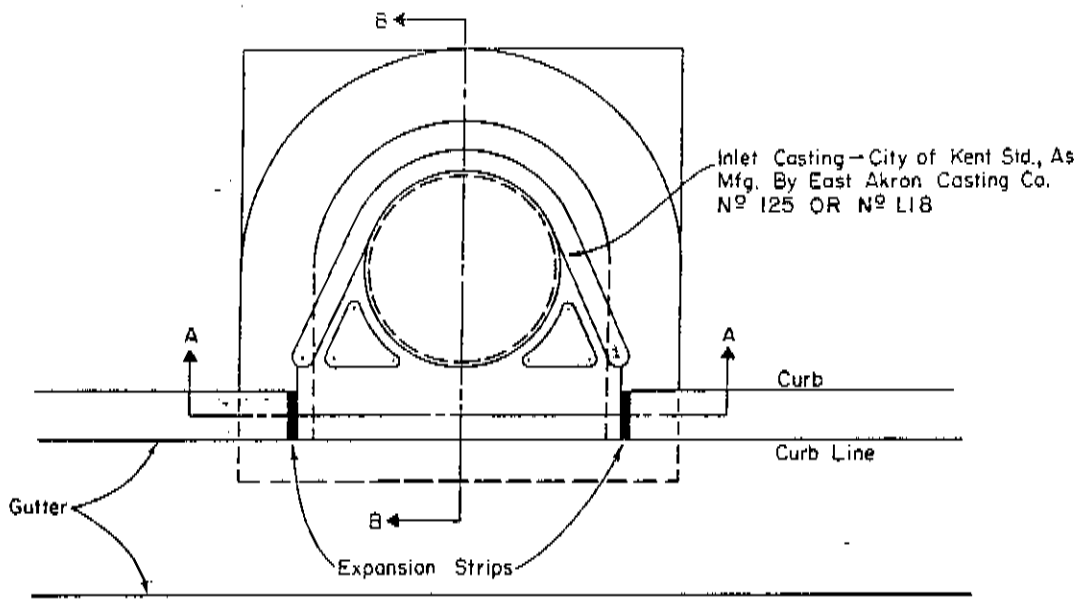


**SECTION B-B**

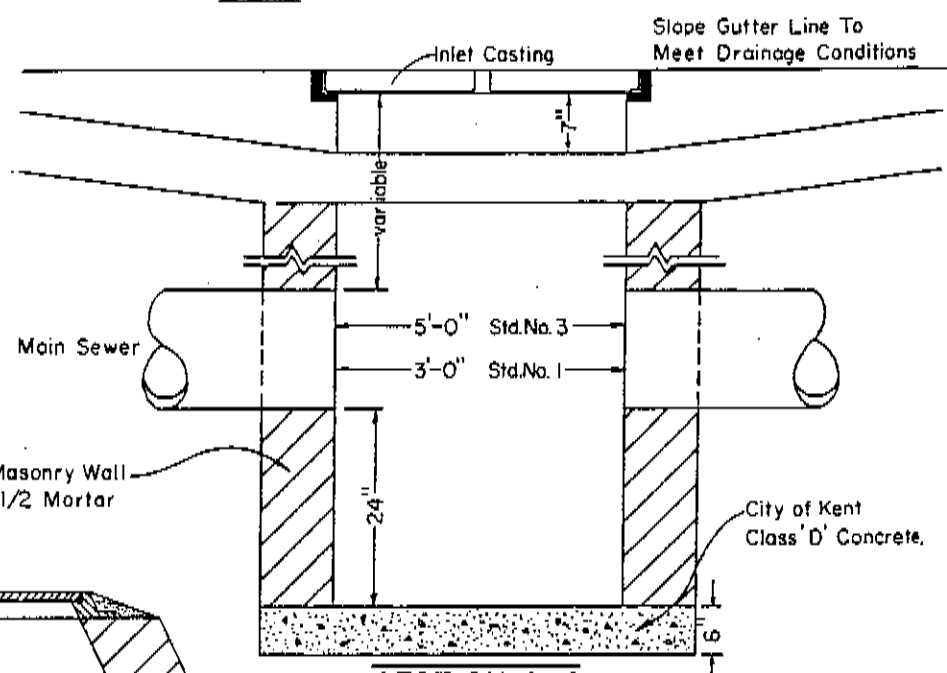
**\* FOR REFERENCE ONLY - NOT APPROVED FOR NEW INSTALLATIONS.**

<b>CITY OF KENT, OHIO</b> DEPT. OF PUBLIC SERVICE ENGINEERING DIVISION		
<b>CONSTRUCTION STANDARDS</b>		
<b>STANDARD N<sup>o</sup>. 1 &amp; 3 CURB INLET*</b>		
DATE	12/77	BY H. C. S. NO. RE-4
CITY ENGINEER	B. BOUMAN	

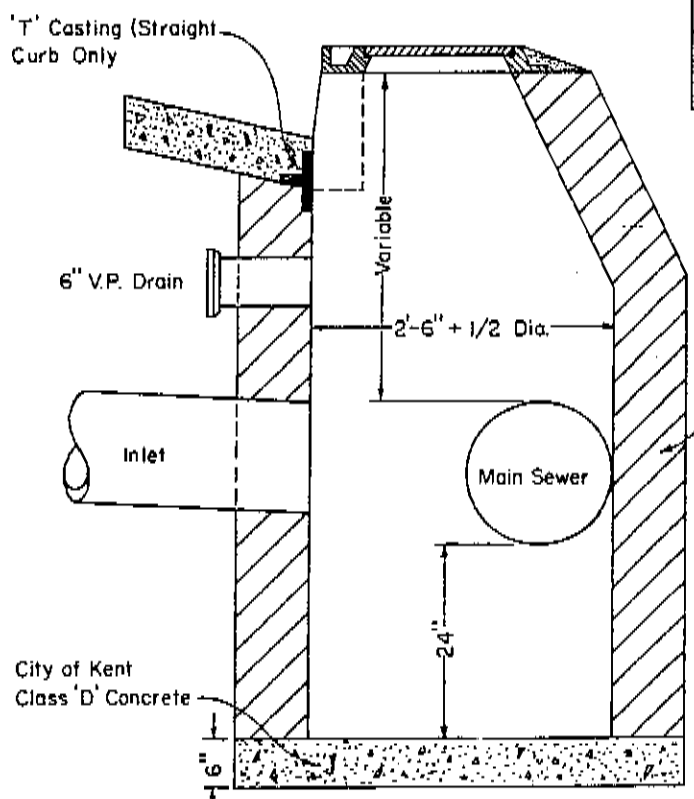
\* FOR REFERENCE ONLY - NO LONGER APPROVED FOR NEW INSTALLATIONS



**PLAN**



**SECTION A-A**

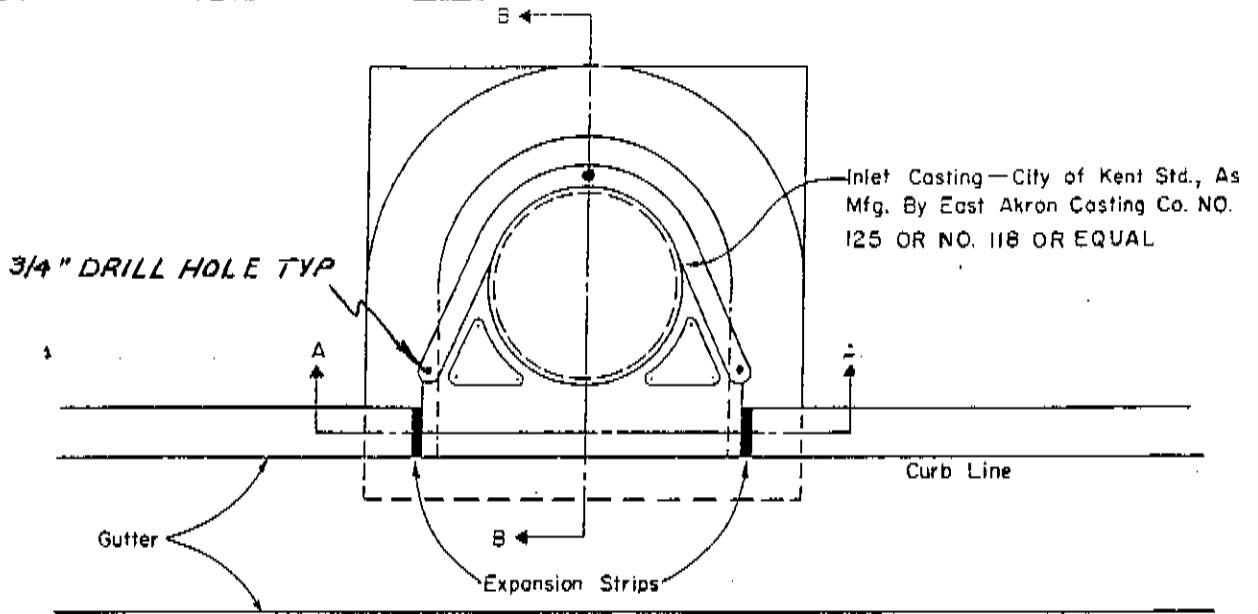


**SECTION B-B**

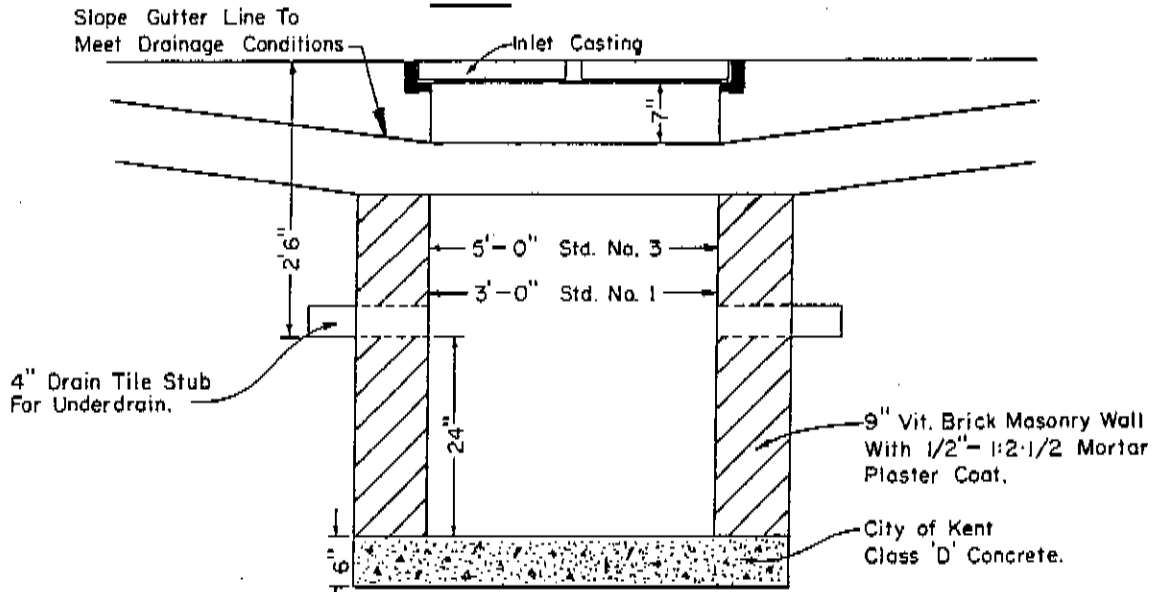
**NOTE:** THIS STANDARD TO BE USED ONLY AS DIRECTED BY ENGINEER

CITY OF KENT, OHIO DEPT. OF PUBLIC SERVICE ENGINEERING DIVISION		
<b>CONSTRUCTION STANDARDS</b>		
STANDARD NO. 3 COMBINATION CURB INLET (As Revised Per Ord. No. 1973-72) *		
DATE	BY	NO.
12/77	HCS	RF-5
CITY ENGINEER <b>B. BOUMAN</b>		

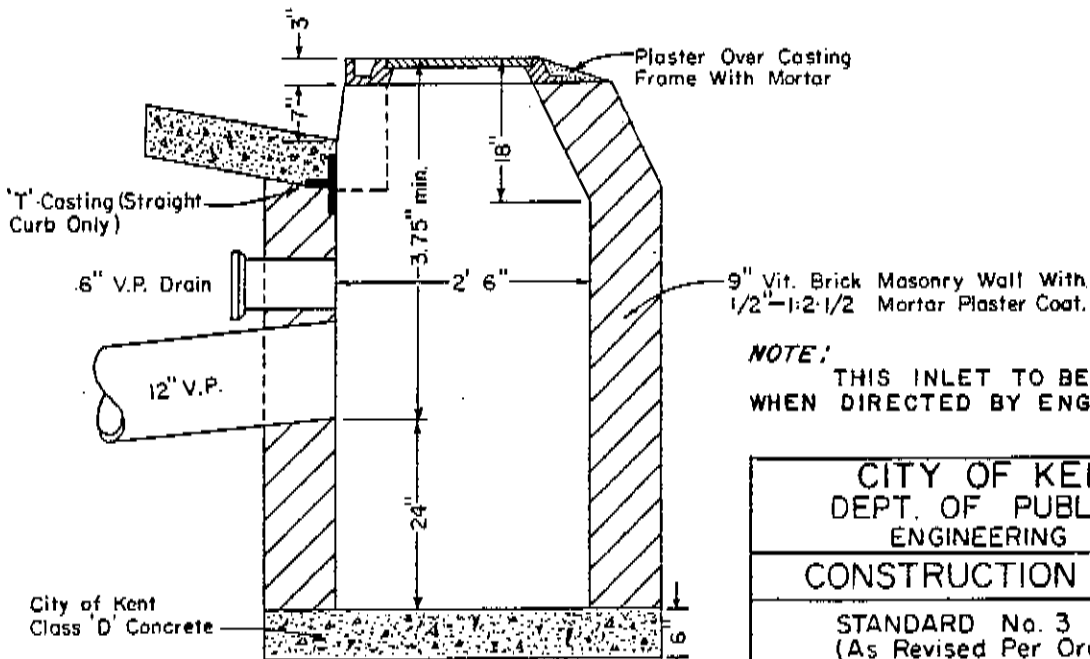
\* FOR REFERENCE ONLY - NO LONGER APPROVED FOR NEW INSTALLATIONS



**PLAN**



**SECTION A-A**



**SECTION B-B**

**NOTE:** THIS INLET TO BE USED ONLY WHEN DIRECTED BY ENGINEER.

CITY OF KENT, OHIO DEPT. OF PUBLIC SERVICE ENGINEERING DIVISION	
<b>CONSTRUCTION STANDARDS</b>	
STANDARD No. 3 CURB INLET * (As Revised Per Ord. No. 1973-72)	
DATE	12-31-77 BY H.C.S. NO. RF-6
CITY ENGINEER B. BOUMAN	